



### Product Warranty

**Product Warranty** — 30 Year Limited Warranty for Interior Applications - 20 Year Limited Warranty for Exterior Applications  
 Smartboard Building Products Inc. warrants its products conform to Smartboard Building Products Inc. published specifications. The user shall determine the suitability of the product for their particular application. THE FOREGOING WARRANTY IS IN LIEU OF ALL OTHER WARRANTIES, EXPRESSED OR IMPLIED, INCLUDING THOSE OF MERCHANTABILITY OR FITNESS FOR ANY PURPOSE NOT EXPRESSLY SET FORTH HEREIN. Smartboard Building Products Inc. and any seller's liability for damage hereunder shall not exceed the purchase price of the product. IN NO EVENT SHALL MANUFACTURER OR SELLER BE RESPONSIBLE FOR INCIDENTAL OR CONSEQUENTIAL DAMAGES ARISING OUT OF OR IN CONNECTION WITH THE USE OF THIS PRODUCT BY BUYER, BUYER'S USER, OR ANY OTHER PERSON. Notification of any claim must be sent in writing to Smartboard Building Products Inc. within thirty days from the time the discovery of the problem. The notice should contain: copies of any sales receipts, invoices or other documents which may show the date(s) of purchase and installation, a statement as to how the product failed to meet our warranty and the amount of refund claimed.

**Warranty Conditions** - This warranty applies if the following conditions are met:

- Interior** -
- 1) The installation is in Residential and commercial construction.
  - 2) The installations conform to specifications published by Smartboard Building Products Inc.
  - 3) Product has not been abused or improperly stored.
  - 4) Product has not been used in an proper application.
  - 5) The building in which the products are installed is maintained with reasonable care.

- Exterior** -
- 1) Use in exterior walls and ceilings construction including Direct Applied Exterior Finish Systems, Exterior Insulation Systems, Exterior Ceramic Tile and Masonry Veneer Systems.
  - 2) All substrate shall be free from defects in the manufacture of materials.
  - 3) All substrates shall be free from all deleterious materials which may affect bonding of all coatings.
  - 4) The building in which the products are installed is maintained with reasonable care.

### Items Not Covered by Warranty

Smartboard Building Products Inc. shall not be liable for any loss resulting from:

- 1) Installation practices not in accordance with Smartboard specifications.
- 2) Installation not in accordance with manufacturer of any exterior cladding product or system attached to the Smartboard cement board.
- 3) Damage due to structural movement of the building or failure of the structural material to which the Smartboard panel is attached.
- 4) Damage caused from acts of God such as earthquakes, storms, floods etc.
- 5) Water damage caused by leaky windows and doors or by failure to properly apply sealants, flashings and weeping verts, windows, doors and door openings.
- 6) Damage caused by application onto twisted or bowed or warped supporting stud work.
- 7) Damage caused by use of other manufacturers products unless these products are specifically recommended or approved in writing by Smartboard Building Products Inc.

### Disclaimer

The information contained herein are provided to assist the writing of Construction Specifications as they relate to the use and installation of Smartboard products, as of the date of publication of this document and are presented in good faith. Due to the wide variation in construction, related products and application methods, the specifications and recommendations contained herein must be fully evaluated by the Owner's Consultant to verify the suitability of design specifications for a given structure before using them in whole or in part. Smartboard Building Products Inc. assumes no liability, expressed or implied, as to the architecture, engineering or workmanship of any project. To ensure that you are using the latest and most complete information, please contact Smartboard Building Products Inc.



Smartboard Uses 40% Re-Cycled materials.

**Evolving Construction Products  
 Preserving Nature**

Toll Free: 1-866-761-1991

T: 905-761-1999 F: 905-761-7693 E: info@smartbrd.com W: www.smartbrd.com

615 Bowes Rd, Unit 6, Concord, ON, Canada L4K1J5



SMARTBOARD BUILDING PRODUCTS INC.



**Smartboard**  
 Building Products Inc.  
 Naturally Superior

# Breakthrough Environmental Cement Board

## Company

Smartboard Building Products Inc. was incorporated under the laws of Ontario, Canada in 1996. It's primary objective was to further it's research and development towards creating the best exterior cement board with a strong commitment to a greener environment. This resolution produced a superior product for all wall cladding and sheathing systems.

Today the company is dedicated to meet the fast growing market requirements of Cement Board throughout the world through the sale of product or licensing of Smartboard's patented manufacturing technology.

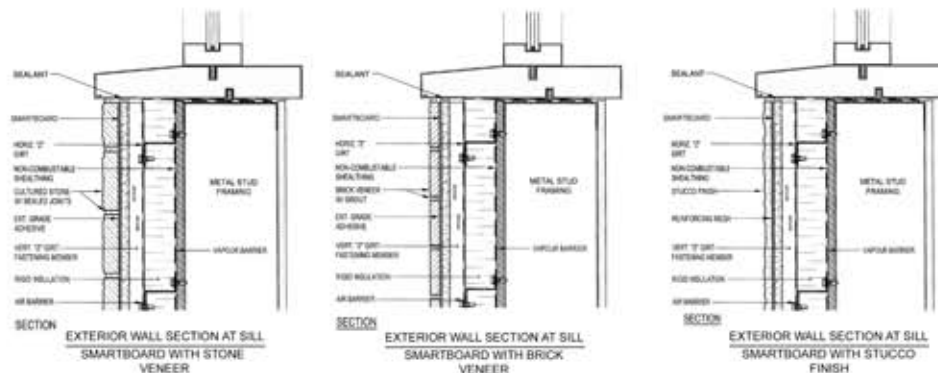
## Products

Smartboard has fire rated assemblies resulting in excellent life safety performance where required. Smartboard is ideal for all climatic conditions providing exceptional protection from high humidity and freeze/thaw conditions. Outstanding protection is achieved when exposed to water.

Smartboard's unique formula produces a high quality panel with exceptional handling characteristics making our product the best choice for new construction or renovation and can be used for a wide variety of interior and exterior applications.

- 1/2" Thickness 4' x 8'
- Non-Combustible
- Water Resistant
- Fungus and Bacteria Resistant
- Lightweight
- High Compressive Strength
- High Flexural Strength
- Dimensionally Stable in High Humidity Applications
- Easy to Score, Cut and Install
- Rodent and Termite Protection
- Sound Insulation
- Compatible with All Finishing Systems
- Interior and Exterior Tile Substrate
- Fireplace insert linings & outdoor living kitchen applications

## Ideal for Use in Sustainable Building Envelope Construction



## Rain Screen Water and Vapor Management System



- Taping made easy leaving a seamless finish.



- Smartboard is made with 40% recycled materials.



## TECHNICAL PROPERTIES



Physical Test	Test Method	Units	Results
Water Absorption	ASTM C437 Section 20	(Mean % water / volume)	5.33
Humidified Deflection	(CSA) A82.20.3	(in)	0.11
Linear Variation	ASTM D1037 Section 107 to 110	(%)	.07
Flexural Strength	ASTM C473 Section 7 ASTM C947	(psi)	1200
Nail Pull Resistance	ASTM C473 Section 9 ASTM D1037 Section 15	(lbf) (lbf)	200 200
Falling Ball Impact	ASTM D1037 Section 21	No Damage	Pass
Compressive Strength	ASTM C495	(psi)	2367
Compression Indentation	ASTM D2394 Section 7-11	(psi)	3800
Weight (Density)		(lb/ft <sup>2</sup> )	2.75
Joint Depth	ASTM C473 Section 17	(in)	0.06
Squaring	ASTM C473 Section 15	(mm)	.112
Thermal Resistance	ASTM C518	(btu.in./h.ft <sup>2</sup> .°F)	(1.305K), R .42
Flame Spread and Smoke Development	CAN/ULC S102		0/0
Flame Spread and Smoke Development	ASTM E84-05		0/0
Corner Wall Test	ULC S127		0
Room Fire Test	UL 1715		Undamaged
Non-Combustibility	ASTM E-136-04		Non-Combustible
Modulus of Elasticity	ASTM C947	Mpa	4500
Freeze/Thaw Resistance	ASTM C947	50 cycles	Exceeds Requirement
Warm Water Resistance	ASTM C1185	70%	Pass
Fungus Resistance	ASTM G21-96		No Growth
Bacteria Resistance	ASTM G22-76		No Growth
Fire Resistance Rating (Load Bearing)	ASTM E-119-05 CAN/ULC S101-04 NFPA 251 UBC 7-1 UL 263		1, 1 3/4 hour